

## Related Public Programs:

### Hack-a-Thon at Center Sunday

Sunday, October 3, 1-4 pm

Drop-in workshops led by four artists on processes like cooking, pressing, shredding, etc. used to produce new art materials. All ages welcome.

### Center Sunday: "Rot & Grow"

Sunday, November 7, 1-5 pm

Join us for workshops and discussion centered around food and sustainability! The workshops will be followed by the Empty Bowls event inside of Lan Tuazon's exhibition, *Future Fossils: SUM*. All ages welcome.

For more information about these events and our covid guidelines for participants visit: [www.hydeparkart.com/events](http://www.hydeparkart.com/events)

### Lead sponsor:

ABAKANOWICZ

Arts and Culture Charitable Foundation

The exhibition and program is generously supported by:



Materials, knowledge, and skills for this exhibition were generously provided by:



Some of the artworks on view are available for purchase through the Hyde Park Art Center. Pricelists are available at the front desk. If interested, contact [exhibitions@hydeparkart.org](mailto:exhibitions@hydeparkart.org).

## Hyde Park ARTCENTER

5020 South Cornell Avenue Chicago, Illinois 60615 773.324.5520 [www.hydeparkart.org](http://www.hydeparkart.org). Hyde Park Art Center is a unique resource that advances contemporary visual art in Chicago by connecting artists and communities in unexpected ways. The Art Center is funded in part by the: Alphawood Foundation; Andy Warhol Foundation for Visual Arts; a City Arts III grant from the City of Chicago's Department of Cultural Affairs and Special Events; Field Foundation of Illinois; Harpo Foundation; Harper Court Arts Council; Illinois Arts Council, a state agency; The Irving Harris Foundation; The Joyce Foundation; Leo S. Guthman Fund; Lloyd A. Fry Foundation; MacArthur Fund for Arts and Culture at Prince; Polk Bros. Foundation; Searle Funds at The Chicago Community Trust; and the generosity of people like you.

## Future Fossils SUM: by Lan Tuazon

Gallery 1

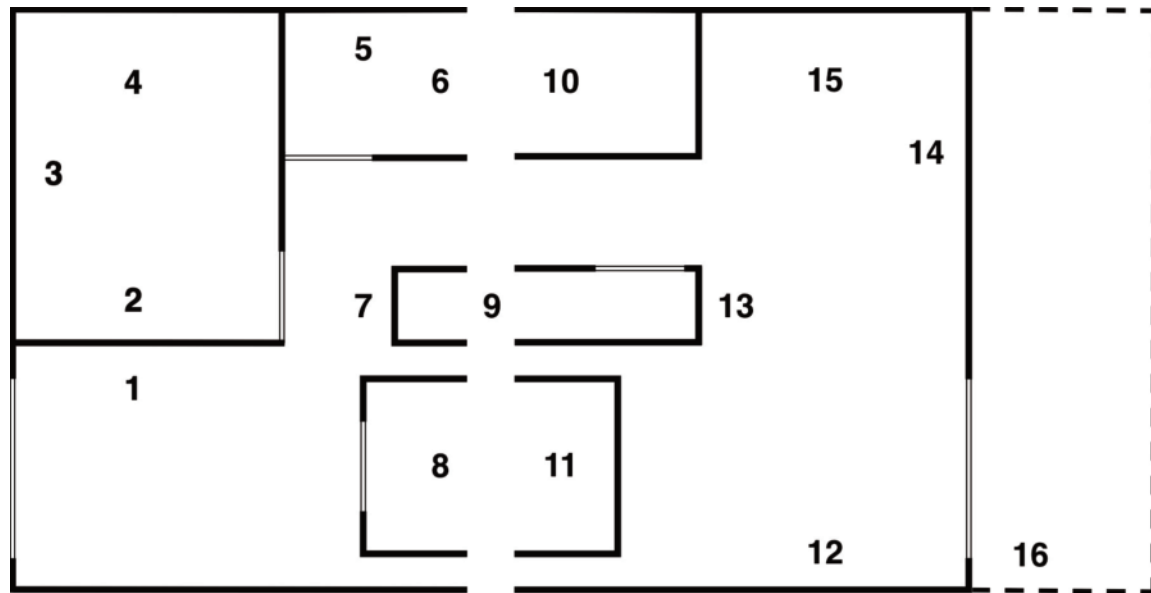
September 7 - November 13, 2021



Lan Tuazon, *Future Fossils*, 2016-2021, recovered plastic and coffee shelves, dimensions variable.

Featuring work by Sungho Bae, Ruth Levy, Michelle Nordmeyer, Kate Poulos, Anirudh Singh Shaktawat, Rachel Kaching Tang, and Lan Tuazon.

Hyde Park  
**ART  
CEN  
TER**



**1. Kate Poulos**  
*Sparkling Lumps of Heart*  
 2021  
 Salt, pvc, polystyrene, rubber, asphalt, polyester, pine rosin, and Sanlando's whiskers, handmade and painted metal shelf  
 27 x 48 x 14 ½ inches

**2. Anirudh Singh Shaktawat**  
*Untitled (Image in stone)*  
 2021  
 Quarry dust on paper  
 18 x 24 inches

**3. Lan Tuazon**  
*Untitled Arms*  
 2021  
 Wood (mahogany, Zebra wood, cedar, found stick, basswood) and latex  
 Variable dimensions

**4. Lan Tuazon**  
*Death's Souvenir*  
 2018  
 Wood plinth, plastic, nylon, foam, ceramic, animal bone, and resin  
 23 x 47 ½ x 96 inches

**5. Lan Tuazon**  
*Silver Tongue Devil*  
 2021  
 Silver hair and sumi ink  
 17 x 11 inches

**6 and 10. Lan Tuazon**  
*Future Fossils (Watertank)*  
 2021  
 Recovered plastic  
 77 x 47 x 20 inches each

**7. Lan Tuazon**  
*News wood*  
 2021  
 Newspaper and glue  
 Dimensions variable

**8 and 11. Lan Tuazon**  
*Future Fossils (Shed)*  
 2021  
 Recovered plastic and wood  
 46 x 48 ½ x 20 inches each

**9. Sungho Bae**  
*New Galápagos Islands: On the Origin of Species By Means of Market Selection*  
 2021  
 Reconstituted plush toys of various Frankenstein's monsters, wood base, and steel pipe  
 48 x 48 x 36 inches

**12. Rachel Kaching Tang**  
*Redistribute*  
 2021  
 Archival digital prints and construction waste  
 13 x 19 inches

**13. Michelle Nordmeyer**  
*Spring Awakening*  
 2021  
 Relief prints on used coffee filters  
 72 x 36 inches

**14. Lan Tuazon**  
*Future Fossils*  
 2016-2021  
 Recovered plastic  
 Variable dimensions

*Coffee shelves*  
 2021  
 Coffee grounds and shellac  
 1 x 9 x 72 inches each

**15. Ruth Levy**  
*Zula*  
 2021  
 Concrete, wood, glazed porcelain  
 12 x 13 inches in diameter

**16. Rachel Kaching Tang**  
*With Further Use*  
 2021  
 Stoneware, eggshell ash glaze, and cardboard  
 11 x 10 inches in diameter (black) and 9 x 7 inches in diameter (white)